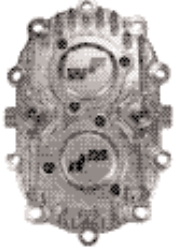


## QC GEAR COVERS



- LIGHT-WEIGHT ALUMINUM
- HIGH QUALITY GEAR COVERS
- COVER COMES WITH BEARINGS

ALUM GEAR COVER 6746



ALUM NUT KIT 6390AR

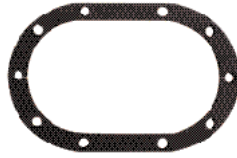
## RING & PINION SETS

SUPER DUTY



4.86 (BARE)	5400
4.86 (W/BRGS)	5401
4.11 (W/BRGS)	5715
RING GEAR BOLT SET	7165

## QC GASKETS



- .030 THICK
- FITS 6 AND 10 BOLT QC COVERS

FELPRO QC GASKET (1)	2303
WINTERS HD GASKET	6729HD

## HEAT TREATED LOWER SHAFT



- FITS QC REAR END

STD QC	5003
--------	------

## QC SPOOL



- 31 SPLINE
- ALUMINUM
- 5.5 LBS

WINTERS	5034-11A
---------	----------

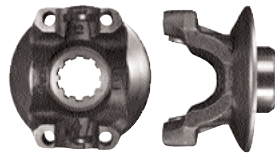
## QC SIDE BELLS



- MAGNESIUM

- 6 RIB MAGNESIUM SIDE BELLS
- RIGHT SIDE WITH INSPECTION PLUG INSTALLED
- CLOSED TUBE
- LIGHTWEIGHT

## INPUT YOKE



- FOR QC REAR

YOKE	5038
BOLT	7109Y
WASHER	5037

K1663-01B	MAGNESIUM RIGHT
K1663-02	MAGNESIUM LEFT
1663-01B	ALUMINUM RIGHT
1663-02	ALUMINUM LEFT

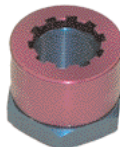
## BEARING U BOLT



- FITS QC YOKE
- FITS FORD 9" YOKES

PAIR	UBK-10
1/4" LONGER BOLT KIT	UBK-10L

## PINION NUT



- SELF LOCKING

6823
------

## QC GEAR BOX



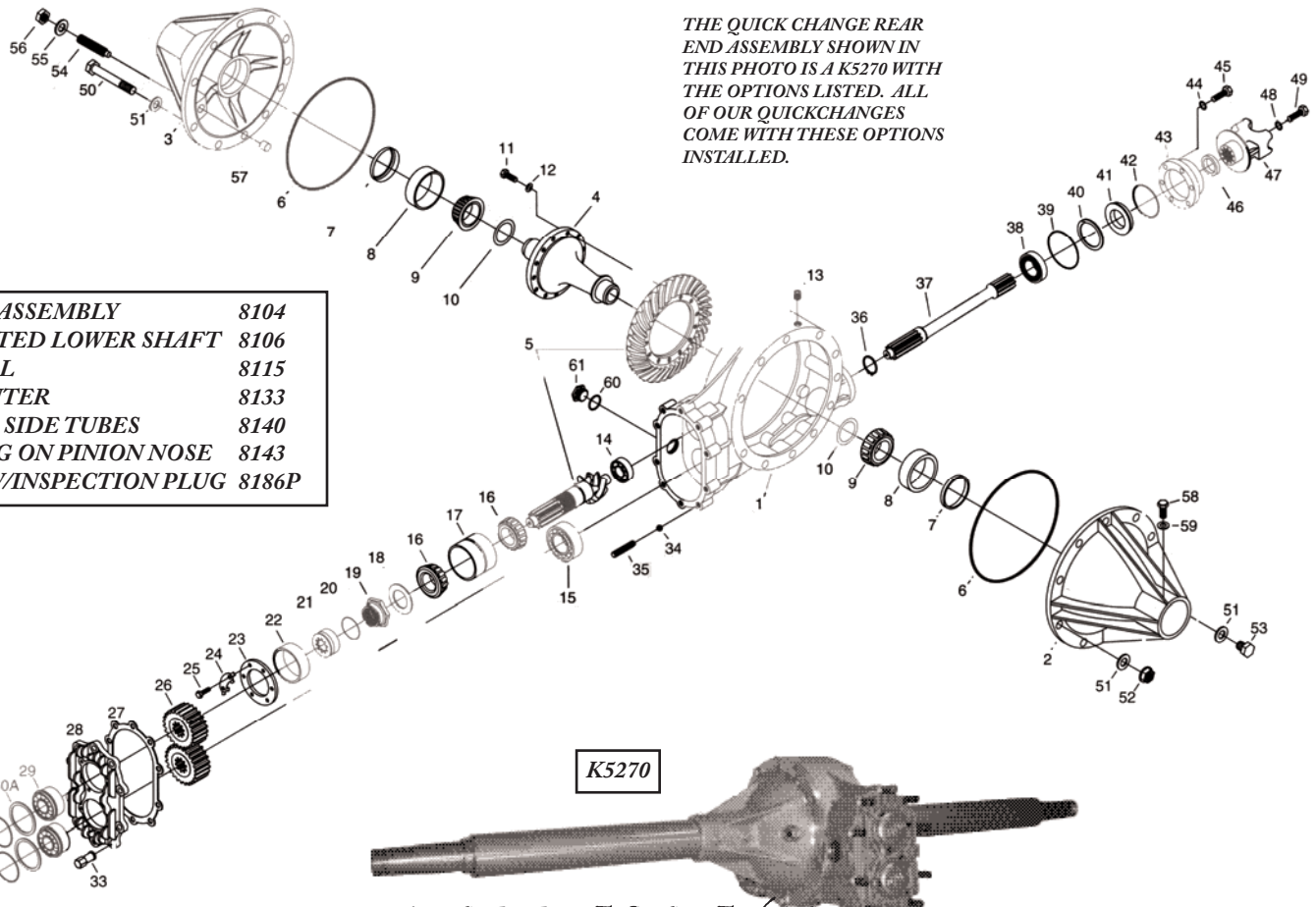
- IDENTIFIES AND PROTECTS GEARS
- AVAILABLE IN WHITE

100-7760
----------

1-800-328-3618

## SPRINT CENTER QUICK CHANGE REARS

1	5840	ALUMINUM SPRINT CENTER SECTION	33	7794A	3/8-16 ALUMINUM HIGH NUT
2	5016-01	ALUM HD 8 RIB RIGHT SIDE BELL	34	7398	5/16" DIAMETER BALL, GEAR COVER
3	5016-02	ALUM HD 8 RIB LEFT SIDE BELL	35	7802	3/8-16 X 1 3/4" STUD, GEAR COVER
4	5034-11A	31 SPLINE ALUM SPOOL	36	7610	SNAP RING, LOWER SHAFT
5	5400	RING AND PINION (STD W/4.86 RATIO)	37	5003-02	STD LOWER SHAFT
6	7403	ORING (8 RIB SIDE BELL)	38	7390	FRONT BALL BEARING, LOWER SHAFT
6	7403T	ORING (4 & 6 RIB BELL)	39	7413	ORING, SEAL PLATE
7	7205	SEAL, SIDE BELL	40	7653	SNAP RING, SEAL PLATE (.375" SEAL)
8	7310	BEARING CUP, SIDE BELL	40	7653	SNAP RING, SEAL PLATE (.375" SEAL)
9	7309	BEARING CONE (STEEL SPOOLS & DIFFERENTIALS)	41	7204	SEAL, SEAL PLATE (THIN SEAL .375")
9	7340	BEARING CONE (ALUM SPOOLS & DIFFERENTIALS)	41	7204T	SEAL, SEAL PLATE (THICK SEAL .750")
10	5097	SHIM KIT (STEEL SPOOLS & DIFFERENTIALS)	41	7204V	SEAL, SEAL PLATE (VITON SEAL .750")
10	5295	SHIM KIT (ALUM SPOOLS & DIFFERENTIALS)	42	7474	ORING, SEAL
11	7852	RING GEAR BOLT (THREADED RING GEAR)	43	K5018-01M	SEAL PLATE, .750 SEAL
12	7815	3/8 BELLEVILLE WASHER (THREADED RING GEAR)	44	7114	3/8 SAE FLATWASHER
13	7111B	3/8 RECESSED SOCKET HEAD PIPE PLUG	45	7107	3/8-16 X 1 1/4" HHCS, SEAL PLATE
14	7331	ROLLER BEARING, PINION NOSE	46	6532	SPACER, DRIVE YOKE
15	7339	SHIELDED BALL BEARING, LOWER SHAFT	47	5038	DRIVE YOKE (STEEL)
16	7308	BEARING CONE, PINION SHAFT	47	5038A	DRIVE YOKE (ALUMINUM)
17	7307	DOUBLE BEARING CUP, PINION SHAFT	48	5037	RETAINING WASHER, DRIVE YOKE
18	5055	BEARING WASHER	49	7109Y	3/8-24 X 1" HHCS, DRIVE YOKE
19	6485R	POSI-LOCK NUT, PINION SHAFT	50	7176	7/16-20X 5 1/2" THRUBOLT
20	7445	ORING, POSI-LOCK	51	7178	7/16 SAE FLATWASHER, THRUBOLT
21	6484	POSI-LOCK RETAINER, PINION SHAFT	52	7177	7/16-20 FLANGED LOCKNUT, THRUBOLT
22	5020	RETAINING RING, PINION	53	7117	7/16-14 X 1 1/4" HHCS
23	6296A	RETAINING PLATE, PINION	54	7155	1/2-13 ADJUSTING SCREW (8 RIB BELL)
24	2374	LOCK TAB	54	6149	1/2-13 ADJUSTING SCREW (4 & 6 RIB BELL)
25	7110	3/8-16 X 1" HHCS, RETAINING PLATE	55	7167	1/2 SAE FLATWASHER, ADJUSTING SCREW
26	8500	QUICK CHANGE GEAR SET (NOT INCLUDED)	56	7137	1/2-13 JAM NUT, ADJUSTING SCREW
27	6729	GASKET, GEAR COVER	57	5010	THRUSTBLOCK
28	K6583	GEAR COVER (LESS BEARINGS)	58	7109	3/8-24 X 1" HHCS, 8 RIB SIDE BELL
29	7521	BALL BEARING, GEAR COVER	58	7109S	3/8-24 X 3/4" HHCS, 4 & 6 RIB BELL
30	7406	ORING, BEARING CAP	59	7114	3/8 SAE FLATWASHER
31	1667	BEARING CAP	60	7454	ORING, PLUG
32	7955	1/4-20 X 1" SHCS	61	6857	INSPECTION PLUG



THE QUICK CHANGE REAR END ASSEMBLY SHOWN IN THIS PHOTO IS A K5270 WITH THE OPTIONS LISTED. ALL OF OUR QUICKCHANGES COME WITH THESE OPTIONS INSTALLED.

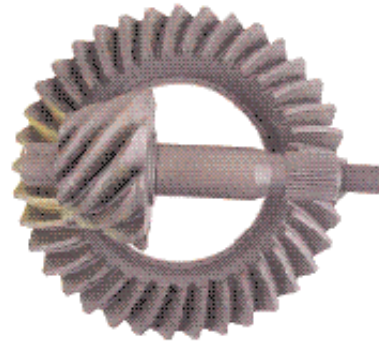
POSI-LOCK ASSEMBLY	8104
HEAT TREATED LOWER SHAFT	8106
ALUM SPOOL	8115
SPRINT CENTER	8133
ALUMINUM SIDE TUBES	8140
ROLLER BRG ON PINION NOSE	8143
SIDE BELL W/INSPECTION PLUG	8186P

K5270

1-800-328-3618

## 9" FORD GEARS

RATIO	STD.	LIGHTENED
4:86	F9486	F9486LW
5:14	F9514	F9514LW
5:29	F9529	F9529LW
5:43	F9543	F9529LW
5:67	F9567	F9567LW
5:83	F9583	F9583LW
6:00	F9600	F9600LW
6:20	F9620	F9620LW
6:33	F9633	F9633LW
6:50	F9650	F9650LW
6:66	----	F9666LW
6:83	----	F9683LW
7:00	----	F9700LW



- SUPERIOR QUALITY RACING GEARS AT AFFORDABLE PRICES
- AVAILABLE IN ALL POPULAR OVAL TRACK RACING RATIOS

## 9" FORD CARRIER CAN

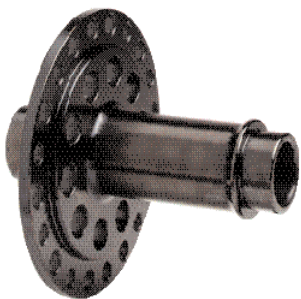
- PROTECTS 9" FORD GEARS WHEN NOT IN USE
- PLASTIC BOX KEEPS GEARS CLEAN AND DRY
- STORES GEARS VERTICALLY SO USED GEAR LUBE DRAINS OUT OF HOUSING



HORIZONTAL	700-009-01
VERTICAL	700-010-01

UNDER CONSTRUCTION

## 9" FORD LW SPOOL



- CONFORMS TO STEEL COMPONENT RULES
- CNC MACHINED FROM 4140 STEEL FORGINGS
- LIGHTWEIGHT AND DURABLE
- 31 SPLINE
- 5.8 LBS.

28 SPLINE	FS28
31 SPLINE	FS31

## REAR END FILLER



- ALL ALUMINUM
- LOW PROFILE ABOVE SHEET
- METAL
- #10 OUTLET
- 1/4 TURN VENTED CAP
- 8 1/2" OVERALL HEIGHT

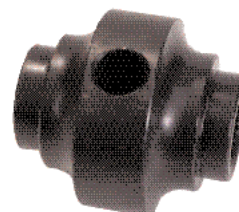
REAR END FILLER	100-15387
-----------------	-----------

## 9" FORD AXLE SEALS



100-8541 SEAL ASSY 3"X3/16" TUBE

## MINI SPOOLS & PINS

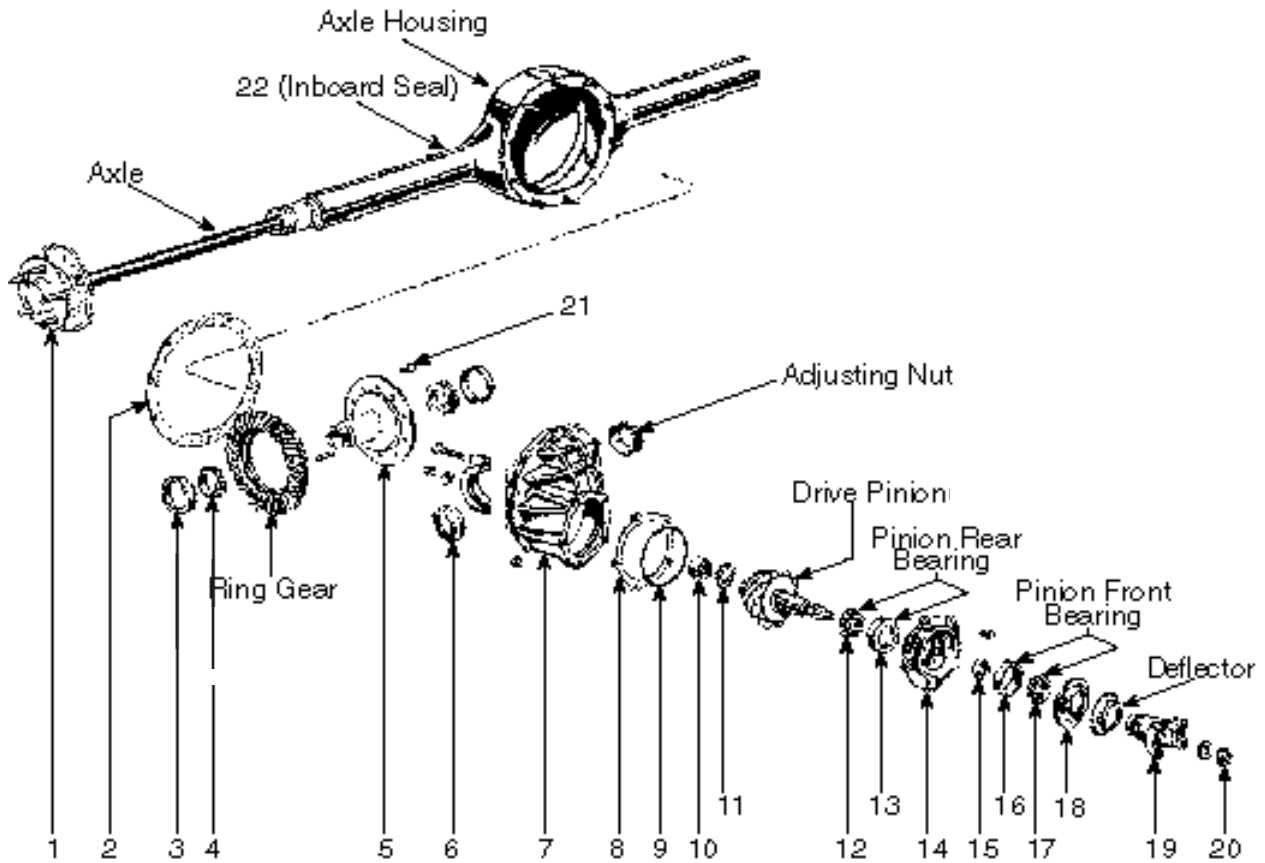


- HIGHEST QUALITY HEAT TREATED MINI SPOOLS DESIGNED FOR OVAL TRACK RACING
- CHROMOLY CROSS PINS

28 SPLINE (FORD)	MS928
31 SPLINE (FORD)	MS931
CROSS PIN (FORD)	60216
28 SPLINE (GM)	MS8528
CROSS PIN (GM)	60215
26 SPLINE (GM)	MS7526

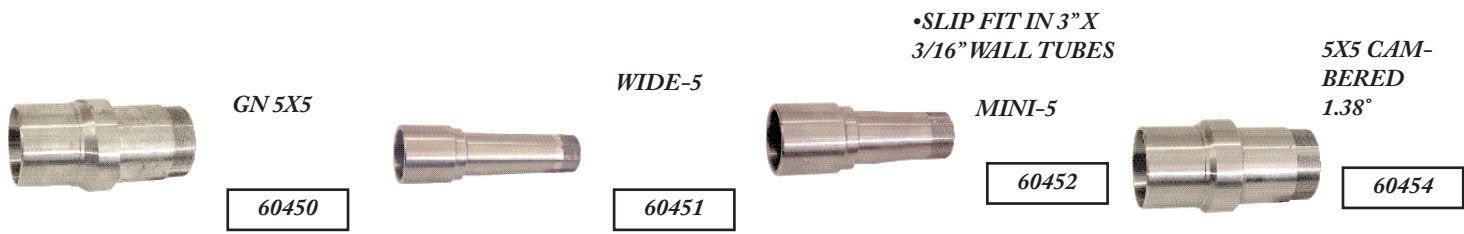
1-800-328-3618

## AFCO 9" FORD ASSEMBLY



1	30530	HUB-REAR 5X5 (COARSE STUDS)	10	60268	BEARING-PINION TAIL SHAFT (9" FORD)
1	30532	HUB-REAR 5X5 (FINE STUDS)	11	60269	RETAINER-TAIL SHAFT BEARING (9" FORD)
1	30533	HUB-REAR 5X4 3/4 (COARSE STUDS)	12	60272	BEARING-PINION (9" FORD) INBOARD-DAYTONA RETAINER
1	30535	HUB-REAR 5X5 ASSEMBLY (COARSE STUDS)	13	60273	RACE-PINION (9" FORD) INBOARD-DAYTONA RETAINER
1	30536	HUB-REAR 5X5 ASSEMBLY (FINE STUDS)	15	60319	CRUSH COLLAR-9" FORD
1	30537	HUB-REAR 5X4 3/4 ASSEMBLY (COARSE STUDS)	16	60270	RACE-PINION (9" FORD) INSIDE-STD, OUTSIDE-ALL
1	30538	HUB-REAR 5X4 1/2 ASSEMBLY (COARSE STUDS)	17	60271	BEARING-PINION (9" FORD) INSIDE-STD, OUTSIDE-ALL
2	60316	GASKET-9" FORD (5 PACK)	18	60314	SEAL-PINION (9" FORD)
3	60260	RACE-CARRIER BEARING (9" FORD W/31 SPLINE)	20	60318	PINION NUT-9" FORD
4	60261	BEARING-CARRIER (9" FORD W/31 SPLINE)	21	60312	BOLT SET-9" FORD RING GEAR (ALL EXCEPT TRACTION-LOK)
5	R200506K	MINI-SPOOL-31 SPLINE FORD (HD HEAT TREATED)	22	100-2841	HOUSING SEAL ASSY. (INBOARD) 9" FORD W/3/16" WALL TUBES
5	R200507K	MINI-SPOOL-28 SPLINE FORD (HD HEAT TREATED)	22	60323-1	HOUSING SEAL ASSY (INBOARD) 9" FORD W/7/32" WALL TUBES
8	60317	SHIM PACK-9" FORD (.006-8-10-12)	22	60323-2	HOUSING SEAL ASSY (INBOARD) 9" FORD W/1/4" WALL TUBES
9	60313	O-RING-PINION 9" FORD	23	60327	CARRIER STUD (10 PACK)

## AXLE TUBE SNOOTS



1-800-328-3618

## PEM 9" FORD REAR END HOUSINGS



60" CENTERED	HN300300
62" CENTERED	HN310310
62" X 2" OFFSET	HN290330

## TRACK 9 9" FORD REAR END HOUSINGS



60" CENTERED	100-89300
62" CENTRED	100-89306
62" X 2" OFFSET	100-89310

## 9" FORD REBUILD PARTS

- HIGH QUALITY FIBER GASKET
- 5 GASKETS IN EACH KIT

60316



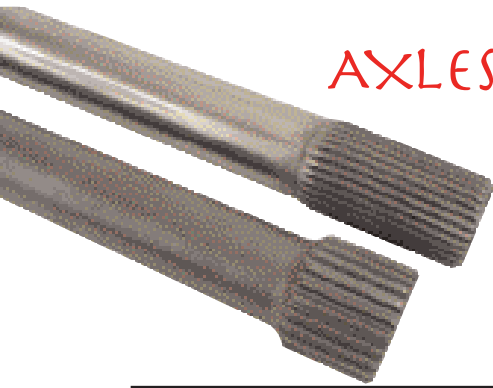
31 SPLINE BRG KIT

60276

1-800-328-3618

# LOU FEGERS RACING EQUIPMENT

## AXLES



LENGTH	31/24 GN & W5 SOLID	31/24 GN & W5 GUNDRILLED
26 1/2"	5069-2612	5067G-2612
27 1/2"	5069-2712	5067G-2712
28 1/2"	5069-2812	5067G-2812
29 1/2"	5069-2912	5067G-2912
30 1/2"	5069-3012	5067G-3012
31"	5069-31	5067G-31
31 1/2"	5069-3112	5067G-3112
32"	5069-32	5067G-32
32 1/2"	5069-3212	5067G-3212
33"	5069-33	5067G-33
33 1/2"	5069-3312	5067G-3312
34"	5069-34	5067G-34
34 1/2"	5069-3412	5067G-3412
35"	5069-35	5067G-35
35 1/2"	5069-3512	5067G-3512
36"	5069-36	5067G-36
36 1/2"	5069-3612	5067G-3612

DESCRIPTION	LH	RH
58" CENTERED	27 1/2"	31 1/2"
60" CENTERED	28 1/4"	32 1/2"
60"X2" OFFSET	26 1/2"	34 1/2"
62" CENTERED	29 1/2"	33 1/2"
62"X2" OFFSET	27 1/2"	35 1/2"
64" CENTERED	30 1/2"	34 1/2"
60"X2" RH OFFSET	30 1/4"	30 1/4"

## WIDE-5 AXLE TUBES



SPECIFY LENGTH WHEN ORDERING

QUICK CHANGE REPLACEMENT TUBES-ALUMINUM	
WINTERS ALUM TUBE	6672
BERT ALUM TUBE	CTD-017

9" FORD REPLACEMENT AXLE TUBES (TRIM TO LENGTH)	
GN 5X5 SPINDLE	60460
MINI-5 SPINDLE	60462
WIDE-5 SPINDLE	60461
GN 5X5 SPINDLES 1.38° CAMBERED	60464

## WINTERS QC GEARS



GEAR SET HIGH	LOW	HIGH	# OF TEETH	4.11 R&P		4.86 R&P	
	SPUR RATIO	SPUR RATIO		LOW	HIGH	LOW	LOW
1	1.00	1.00	21/21	4.11	4.11	4.86	4.86
2	0.96	1.03	27/28	3.96	4.26	4.68	5.04
5	0.96	1.04	24/25	3.95	4.28	4.66	5.07
15A	0.95	1.05	21/22	3.92	4.31	4.64	5.09
15	0.95	1.05	19/20	3.91	4.32	4.63	5.10
26	0.93	1.07	27/29	3.83	4.41	4.52	5.23
6	0.92	1.08	23/25	3.78	4.46	4.47	5.28
25	0.90	1.10	20/22	3.74	4.52	4.42	5.35
12	0.89	1.11	26/29	3.68	4.58	4.36	5.42
7	0.88	1.13	23/26	3.63	4.64	4.30	5.49
7A	0.87	1.14	21/24	3.58	4.69	4.23	5.54
17	0.86	1.15	26/30	3.54	4.76	4.19	5.64
17A	0.85	1.16	24/28	3.52	4.80	4.17	5.67
8A	0.85	1.17	23/27	3.50	4.82	4.14	5.71
8	0.84	1.18	22/26	3.48	4.85	4.11	5.75
19	0.84	1.19	21/25	3.45	4.89	4.08	5.78
9A	0.83	1.20	25-30	3.42	4.93	4.05	5.83
9	0.82	1.21	19/23	3.39	4.97	4.01	5.88
11	0.81	1.22	22/27	3.35	5.04	3.96	5.97
3	0.80	1.24	25/31	3.31	5.10	3.92	6.03
13	0.80	1.25	20/25	3.29	5.14	3.89	6.08
18	0.79	1.26	23/29	3.26	5.18	3.85	6.13
18A	0.79	1.27	22/28	3.23	5.23	3.82	6.19
4A	0.78	1.25	18/23	3.21	5.26	3.80	6.21
20A	0.78	1.29	21/27	3.21	5.30	3.79	6.27
4	0.77	1.29	24/31	3.18	5.31	3.76	6.28
20	0.76	1.30	20/26	3.16	5.34	3.75	6.32
22	0.76	1.32	19/25	3.12	5.41	3.69	6.39
16	0.75	1.33	18/24	3.08	5.48	3.65	6.48
10	0.73	1.35	17/23	3.04	5.56	3.59	6.58
34	0.72	1.37	21/29	2.98	5.68	3.52	6.71
14	0.71	1.39	23/32	2.95	5.72	3.50	6.76
14A	0.71	1.40	20/28	2.93	5.76	3.47	6.81
35	0.70	1.41	17/24	2.91	5.80	3.44	6.86
32	0.70	1.42	19/27	2.89	5.85	3.42	6.90
32A	0.70	1.43	23/33	2.87	5.89	3.39	6.97
24	0.69	1.45	20/29	2.83	5.96	3.35	7.04
36	0.68	1.47	17/25	2.80	6.04	3.30	7.15
37	0.67	1.48	21/31	2.78	6.07	3.29	7.19
23	0.67	1.50	22/33	2.74	6.17	3.24	7.29
21	0.65	1.52	19/29	2.70	6.27	3.20	7.42
27	0.64	1.54	22/34	2.66	6.35	3.15	7.52
43	0.64	1.56	16/25	2.63	6.42	3.11	7.59
28	0.63	1.57	19/30	2.60	6.49	3.08	7.68
29	0.62	1.59	15/24	2.57	6.58	3.04	7.78
39	0.62	1.61	18/29	2.55	6.62	3.02	7.83
30	0.61	1.62	16/26	2.53	6.68	2.99	7.91
40	0.61	1.63	19/31	2.52	6.71	2.96	7.93
41	0.61	1.65	17/28	2.50	6.77	2.95	8.00
31	0.60	1.67	21/35	2.47	6.85	2.92	8.10
33	0.58	1.70	20/34	2.42	6.99	2.85	8.26
31A	0.58	1.71	21/36	2.40	7.05	2.84	8.34
30A	0.57	1.73	15/36	2.37	7.12	2.80	8.42
50	0.57	1.75	20/35	2.35	7.19	2.77	8.50
51	0.56	1.76	17/30	2.33	7.25	2.75	8.57
52	0.56	1.78	18/32	2.31	7.30	2.73	8.64
53	0.55	1.79	19/34	2.29	7.35	2.71	8.69
54	0.55	1.80	20/36	2.28	7.39	2.69	8.75
55	0.55	1.81	16/29	2.27	7.45	2.68	8.81
56	0.54	1.52	17/31	2.25	7.49	2.66	8.86
57	0.53	1.87	16/30	2.19	7.70	2.59	9.11
58	0.53	1.88	17/32	2.18	7.74	2.58	9.15

1-800-328-3618