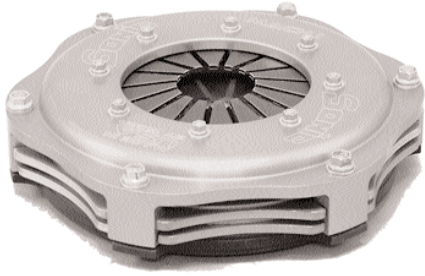


## SONIC CLUTCHES BY TILTON



BUTTON CLUTCH IS COST EFFECTIVE WAY TO UPGRADE OEM-TYPE CLUTCH ASSY.

SBC, 5.5" 3 DISC FINE SPLINE	11003
SBC, 5.5" 2 DISC FINE SPLINE	11004
SBC, 5.5" 3 DISC COARSE SPLINE	11005
SBC, 5.5" 2 DISC COARSE SPLINE	11006
SBC, 7.25" 3 DISC FINE SPLINE	11007
SBC, 7.25" 2 DISC FINE SPLINE	11008
SBC, 7.25" 3 DISC COARSE SPLINE	11009
SBC, 7.25" 2 DISC COARSE SPLINE	11010
2.3L FORD PINTO, 7.25" 1 DISC	11044
THROWOUT BEARING FOR 11044	20010

<b>5 1/2" CLUTCH PACKS</b>	
SONIC	
1800X	2 DISC 10 SPLINE
18001	2 DISC 26 SPLINE
1800x	3 DISC 10 SPLINE
18002	3 DISC 26 SPLINE

<b>7 1/4" CLUTCH PACKS</b>	
SONIC	
18008	2 DISC 10 SPLINE
18003	2 DISC 26 SPLINE
18009	3 DISC 10 SPLINE
18004	3 DISC 26 SPLINE
180xx	1 DISC 30 SPLINE

## TILTON REPLACEMENT CLUTCH PARTS

<b>CLUTCH ASSEMBLY</b>	
67-003HG	5 1/2" 3 DISC
67-002HG	5 1/2" 2 DISC
66-003HG	7 1/4" 3 DISC
66-002UGG	7 1/4" 2 DISC

<b>FLYWHEELS</b>	
50-042-1	7 1/4" CHEVY
50-042-1-87	7 1/4" CHEVY
	'87 CRANK PATTERN
50-042-5	5 1/2" CHEVY

<b>FLOATER PLATES</b>	
67-119	5 1/2" FLOATER PLATE
66-119	7 1/4" FLOATER PLATE

<b>BOLT KITS</b>	
95-005	2 DISC BOLT KIT
95-006	3 DISC BOLT KIT

## QUARTER MASTER CLUTCHES

### 7 1/4" V-DRIVE ASSY



- SAME COVER GEOMETRY AS MORE EXPENSIVE QUARTER MASTER CLUTCHES
- BILLET COVER ELIMINATES FLEXING
- QUARTER MASTER QUALITY AT AN AFFORDABLE PRICE
- 14.5LBS

PART #	DESCRIPTION	SPLINE	CLUTCH PACK	TOB
298108	CHEVY 2 DISC VDRIVE	1 1/8-10	226080	
398108	CHEVY 3 DISC V DRIVE	1 1/8-10	308390	309130
398158	CHEVY 3 DISC V DRIVE	1 5/32-26	308395	309130

<b>COVER ASSEMBLY</b>	
309500	3 DISC & GOLD 2 DISC
<b>PRESSURE RINGS</b>	
209502	2 DISC STYLE (SILVER)
309501	3 DISC STYLE (SILVER)
<b>FLOATER PLATE</b>	
509506	ALL APPLICATIONS
<b>OUTER RINGS</b>	
209503	RING- 2 DISC
309503	RING- 3 DISC
<b>BOLT KITS</b>	
209507	KIT 2 DISC
209508	KIT- 2 DISC REV-MT-FW
309508	KIT- 3 DISC REV-MT-FW
505001	KIT- 5" FLYWHEEL TO CRANK
<b>STARTER RING GEAR</b>	
110010	GEAR FOR 110100 HOUSING
310010	GEAR FOR 3 DISC 5 1/2" REVERSE
<b>FLYWHEELS/FLEXPLATES</b>	
505172	LGC CHEVY 105T FOR 5 1/2" CLUTCH
509110	CHEVY BUTTON
509112	CHEVY 105T
509121	CHEVY 153T FLEXPLATE
509311	SB FORD BUTTON
509322	SB FORD 157T FLEXPLATE

1-800-328-3618

# LOU FEGERS RACING EQUIPMENT

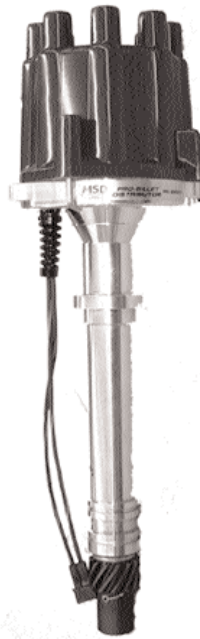
## MSD HEI DISTRIBUTOR



- PRO-BILLET GM HEI DISTRIBUTOR
- CAPABLE OF RUNNING OVER 9000 RPM
- PRODUCES 50% MORE CURRENT THAN STOCK UNITS
- COMES WITH VACUUM ADVANCE CANISTER
- COMES COMPLETE WITH CAP, ROTOR AND INTERNAL COIL
- REPLACEMENT COILS, ROTORS, AND CAPS AVAILABLE

8365

## MSD CHEVY DISTRIBUTOR



- PRO-BILLET CHEVROLET V8
- MAGNETIC PICKUP IS MOST ACCURATE WAY TO TRIGGER IGNITION AND MAINTENANCE FREE
- ADJUSTABLE MECHANICAL ADVANCE ASSEMBLY
- DIFFERENT SPRINGS AND STOP BUSHINGS SUPPLIED TO TUNE ADVANCE CURVE
- MUST BE USED WITH MSD 6, 7, 8 OR 10 SERIES IGNITION
- COMES WITH CAP AND ROTOR

85551

## MSD BOXES



6T BOX, HIGH PERF CIRCLE TRACK	6200
6A BOX, HIGH PERF CIRCLE TRACK	6400
6AL BOX, HIGH PERF, 4,6, AND 8 CYL	6420
6ALN BOX, HIGH PERF	6430

## MSD COILS



BLASTER 2 COIL, MSD APPS	8202
BLASTER 2 COIL, POINTS SYSTEM	8203
BLASTER 2 COIL, HIGH VIBRATION	8222
BLASTER 3 COIL	8223
HEI COIL	8225
XXXXXXXX	8252

## MSD IGNITION WIRES



31599	ALL SBC WITH SOCKET CAP, UNDER HEADERS
31239	SOCKET AND HEI TYPE, 90° BOOTS AND TERMINALS
35599	HEI STYLE WITH 90° BOOTS
3122	SPARK PLUG TOP CAPS, 90° BOOTS, V8
XXXX	SOCKET AND HEI CAPS, MULTI ANGLE BOOTS

## REPLACEMENT PARTS

8410	GM AND MSD HEI ROTOR
8411	GM HEI V8 CAP
83647	MSD 4-PIN GM HEI MODULE
8433	HEI STYLE CAP
8437	CHEVY V8 OLD STYLE CAP
8213	COIL BRACKET
8467	RACING ROTOR FOR MSD & GM DISTRIBUTOR W/WINDOW CAP
8471	CHEVY BRONZE GEAR, .500"ID

1-800-328-3618

## PERFORMANCE DISTRIBUTORS



- DUI GM RACING DISTRIBUTOR
- TWICE THE FIRE OF A MAGNETO
- NO SPARK BOX NEEDED
- NO POINTS
- INSTANT THROTTLE RESPONSE
- CURES TOP END MISFIRE
- RACING ADVANCE CURVE
- INCLUDES CAP, INTERNAL COIL AND DYNA-MODULE

127212

## MOROSO HEI DISTRIBUTOR



- ONE PIECE ALUMINUM HOUSING
- MECHANICAL ADVANCE CURVE KIT WITH EXTRA SPRINGS ALLOW YOU TO RECURVE YOUR DISTRIBUTOR
- HIGH OUTPUT MODULE DELIVERS HIGH SPARK OUTPUT AND EXTENDED RELIABILITY

72331

## LIVE WIRES



- HEAT RESISTANT SLEEVING PROVIDES PROTECTION FROM EXHAUST HEAT
- CUSTOM FIT-NO ASSEMBLY REQUIRED
- NUMBERED ON EACH END FOR CORRECT CYLINDER
- DURABLE SILICONE JACK-

ET AND INSULATION

- SPIRAL WOUND CORE PREVENTS ELECTRONIC INTERFERENCE
- AVAILABLE IN BLACK, RED, BLUE, YELLOW, AND PURPLE

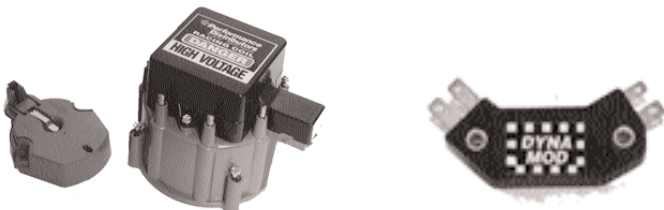
C9051 SB CHEVY, UNDER HEADERS, 90° BOOT  
 C9051P SBC, UNDER HEADERS, POINTS TYPE  
 C9053 SB CHEVY, OVER THE HEADERS  
 C9054 SB CHEVY, AROUND FRONT OF MOTOR

## MOROSO WIRES



72405 SBC, 90° NON-HEI, UNDER HEADERS  
 72407 SBC, 90° HEI UNDER HEADERS  
 72800 STRAIGHT HEI & NON-HEI, SOLID CORE  
 72820 90° HEI & NON-HEI, SOLID CORE

## REPLACEMENT PARTS



121000 CAP, COIL AND ROTOR KIT  
 12000 CAP AND ROTOR KIT  
 000222 DYNA-MODULE

## MOROSO DIST PARTS

26200 DISTRIBUTOR HOLD HOLD CLAMP  
 72300 HEI ADVANCED CURVE KIT, ALL GM HEI DISTRIBUTORS

1-800-328-3618

## QUICK CAR GAUGE PANELS



61-6001



61-6012



61-6021

2 GAUGE PANEL, OIL PRESSURE & WATER TEMPERATURE	61-6001
3 GAUGE PANEL, OIL PRESSURE, WATER TEMPERATURE & FUEL PRESSURE	61-6012
3 GAUGE PANEL, OIL PRESSURE, WATER TEMPERATURE & OIL TEMPERATURE	61-6011
4 GAUGE PANEL, OP, WT, FP AND OT	61-6021

## QUICK CAR IGNITION PANELS



50-102



50-022



50-052



50-164



55-009

IGNITION PANEL WITH PUSH BUTTON AND ON-OFF SWITCH, SILVER	50-102
IGNITION PANEL WITH PUSH BUTTON, ON-OFF SWITCH AND LIGHTS, SILVER	50-052
IGNITION PANEL WITH PUSH BUTTON, ON-OFF SWITCH AND ACCESSORY SWITCH	50-022
IGNITION PANEL WITH PUSH BUTTON, ON-OFF SWITCH AND 5 ACCESSORY SWITCHES	50-164
MASTER DISCONNECT PANEL	55-009

## QUICK CAR WIRING HARNESS



5 FOOT WIRING HARNESS  
MAKES INSTALLING IGNITION  
PANEL QUICK AND  
EASY

MSD IGNITION 50-200  
HEI IGNITION 50-201

## SENDING UNITS



FUEL PRESSURE	4PSI	61-730
OIL PRESSURE	20 PSI	61-735
WATER TEMPERATURE	235DEG	61-740
OIL TEMPERATURE	275DEG	61-750

1-800-328-3618

# LOU FEGERS RACING EQUIPMENT

## IGNITION SWITCH



SINGLE POLE SWITCH 50-500  
DOUBLE POLE SWITCH 50-505

## HD IGNITION SWITCH

HEAVY DUTY  
SEALED SWITCH



SWITCH W/BOOT 85260  
REPLACEMENT BOOT 85271

## HD STARTER BUTTON



COMES WITH  
DUST BOOT

AFCO 85266  
QUICK CAR 50-510

## SWITCH GUARD

HELPS PREVENT  
ACCIDENTAL  
SWITCH ACTION



QUICK CAR 50-501

## IGNITION WARNING LIGHT

WHEN WIRED TO IGNITION SWITCH TELLS  
WHEN IGNITION IS ON.



AFCO LIGHT 85298  
QCR CAR RED LIGHT 50-601  
QCR GREEN LIGHT 50-609

## WARNING LIGHTS

### QUICK CAR WARNING LIGHT KITS

15# OIL PRESS (RED) 61-711  
230° WATER TEMP (AMBER) 61-712  
275° OIL TEMP (BLUE) 61-714  
4# FUEL PRESS (GREEN) 61-719  
4# WATER PRESSURE (AMBER) 61-XXX  
4# WATER PRESSURE KIT WITH GAUGE 61-XXX

### QUICK CAR REPLACEMENT WARNING LIGHTS

15# OIL PRESSURE (RED) 61-701  
230° WATER TEMP (AMBER) 61-704  
275° OIL TEMP (BLUE) 61-702  
4# FUEL PRESSURE (GREEN) 61-709  
BULB ONLY 61-XXX

## BRAKE BIAS GAUGE



61-101 VERTICAL  
61-103 HORIZONTAL

## FITTINGS



1/8" FEMALE PIPE TO #4AN 85259  
(ADAPTS HOSES TO GAUGE)  
1/8" MALE PIPE TO #4AN 816-04P  
(FITS CHEVY ENGINE BLOCK)

1-800-328-3618