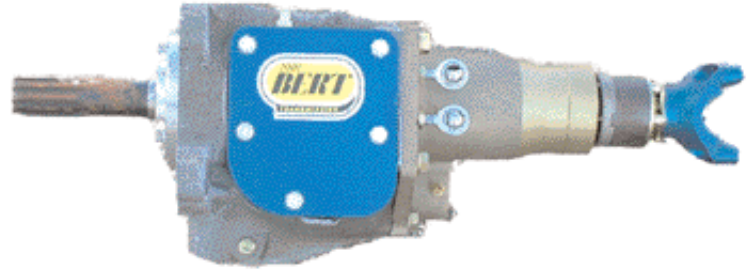


BERT TRANSMISSIONS



BERT ALUM TRANS	LMZ
BERT MAGNESIUM TRANS	LMZ-MAG

BERT MAGNESIUM BALL SPLINE
LMZ-MAG-BS

REBUILD KIT FOR BERT TRANSMISSIONS	
BASIC REBUILD KIT	91
BALLSPLINE REBUILD KIT	3-BS-OK-NEW

SEE DIAGRAM ON PXX FOR ADDITIONAL
PIECES FOR THE BERT TRANSMISSION

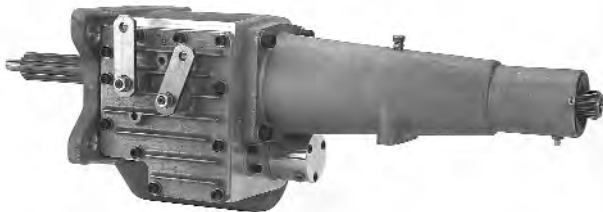
BERT/BRINN CRANK COUPLER



BERT CHEVY-STEEL	7
BERT CHEVY-ALUM	7A
BERT FORD-STEEL	7F
BERT DODGE-STEEL	7D
BERT NEW CHEVY	7NC
BRINN CHEVY STEEL	73018
BRINN CHEVY ALUM	73032

- USE WITH FLEXPLATE
- BRINN/BERT SPLINE

BRINN TRANSMISSIONS FALCON TRANSMISSIONS



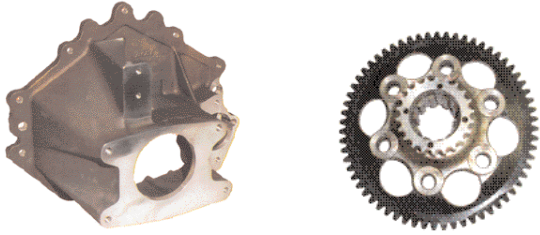
BRINN ALUMINUM TRANSMISSION	70001
REBUILD KIT	70041

FALCON ALUMINUM TRANSMISSION	60100
------------------------------	-------

1-800-328-3618

LOU FEGERS RACING EQUIPMENT

BERT BELLHOUSING AND FLYWHEEL



CHEVY ALUM	301C
CHEVY MAGNESIUM	301C-MAG
FORD ALUM	301F
FORD MAGNESIUM	301F-MAG
FLYWHEEL	370
CENTER HUB STEEL	371H

BERT REPL. PARTS

STARTERS	
STARTER POWER MASTER	9514
STARTER QUARTER MASTER	114170
STARTER BENDIX	114174

SHAFT-IDLER	306	WASHER-IDLER	309
IDLER GEAR	303	SPRING-IDLER	308
BUSHING-IDLER	304		

QUARTERMASTER BELLHOUSING



- STEEL BELLHOUSING
- CHEVY AND FORD PAT-TERN
- IMCA/WISSOTA LEGAL
- WEIGHS UNDER 21 LBS.

110432

BRINN BELLHOUSING AND FLYWHEEL



CHEVY STEEL BELLHOUSING BARE	79050
CHEVY ALUM BELLHOUSING WITHOUT FLYWHEEL	79099
CHEVY FLYWHEEL STEEL	79070
CHEVY FLYWHEEL ONLY	79080
RING GEAR	79081
CHEVY ALUM FLYWHEEL ASSY	79084

STEEL CHEVY COUPLER	73018
ALUM CHEVY COUPLER	73032
BRINN REBUILD KIT	70041

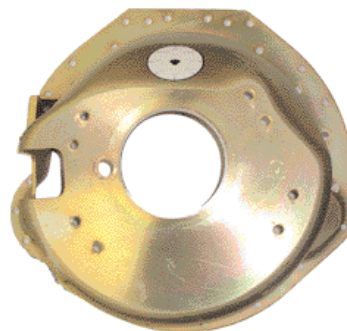
TILTON BELLHOUSING

- STEEL CHEVY BELL-HOUSING
- WEIGHS 21.1 LBS.
- IMCA/WISSOTA LEGAL



53-410

LAKWOOD BELLHOUSING



- SAFETY STEEL BELLHOUSING MANUFACTURED FROM 1/4" HIGH QUALITY STEEL
- TESTED TO SFI SPECS
- FITS MOST CHEVY V8 AND 90 DEGREE V6 ENGINES WITH BLOCK MOUNTED STARTER
- DESIGNED TO CONTAIN CLUTCH FAILURE
- MEETS IMCA REQUIREMENTS

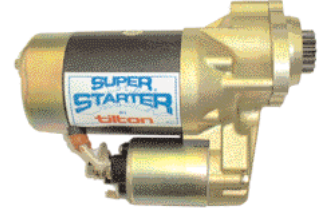
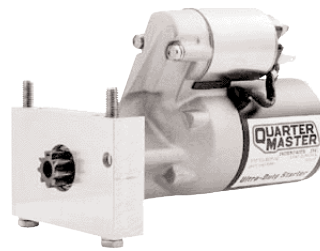
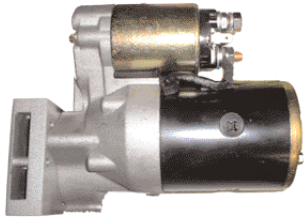
77150

1-800-328-3618

LOU FEGERS RACING EQUIPMENT

STARTERS

HITACHI SBC STARTER	PSL100
POWERMASTER SBC MINI STARTER	9000X
POWERMASTER BERT STARTER	9514
QM BERT REPLACEMENT (HD)	114170
QM REVERSE ROTATION	114260
QM BELL ASSEMBLY (BERT/BRINN)	114180
TILTON CHEVY 153 OR 168 T	54-10001
TILTON CHEVY ULGC W/102T	54-21062

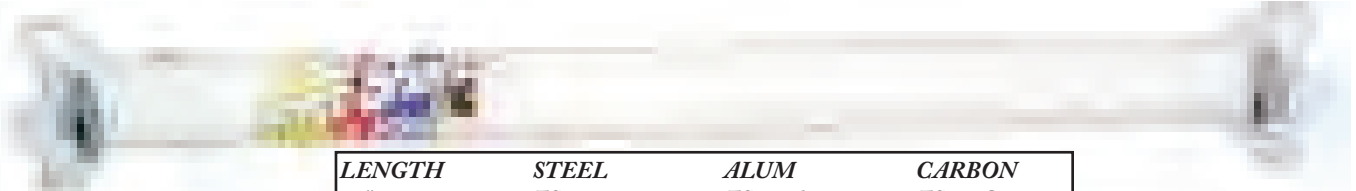


FAST SHAFTS MODIFIED DRIVESHAFTS



LENGTH	STEEL	CHROMOLY
28 1/2"	FS285	FS285C
29 1/2"	FS295	FS295C
30 1/2"	FS305	FS305C
31 1/2"	FS315	FS315C
32 1/2"	FS325	FS325C
33 1/2"	FS335	FS335C

FAST SHAFTS LATE MODEL DRIVESHAFTS



LENGTH	STEEL	ALUM	CARBON
37"	FS370	FS370A	FS370C
37 1/2"	FS375	FS375A	FS375C
38"	FS380	FS380A	FS380C
38 1/2"	FS385	FS385A	FS385C
39"	FS390	FS390A	FS390C

QUARTER MASTER ALUMINUM DRIVESHAFTS

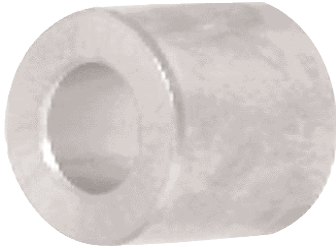


- UNSURPASSED STRENGTH
- SMOOTH, VIBRATION FREE PERFORMANCE
- WEIGHS 40% LESS THAN STEEL DRIVESHAFTS

36 1/2"	188362A	41"	188410A
37"	188370A	41 1/2"	188412A
37 1/2"	188372A	42"	188420A
38"	188380A	42 1/2"	188422A
38 1/2"	188382A	43"	188430A
39"	188390A	43 1/2"	188432A
39 1/2"	188392A	45"	188450A
40 1/2"	188402A		

1-800-328-3618

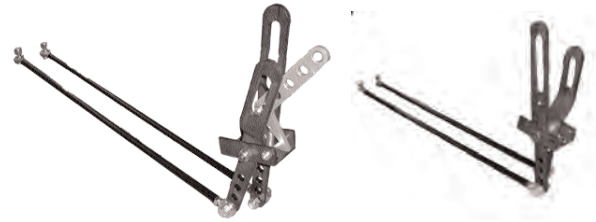
LONG PILOT BUSHING



•LONGER DESIGN
BUSHING COM-
PENSATES FOR
MID-PLATE OR
MOTOR MOUNT
THICKNESS

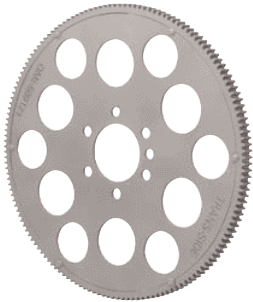
100-360PB

SHIFTERS



2 LEVER SHIFTER	64000
2 LEVER LOCKING SHIFTER	64000L
3 LEVER SHIFTER	64005
SHIFTER ROD 24"	64001-24
SHIFTER ROD 30"	64001-30
SHIFTER ROD 36"	64001-36
SHIFTER ROD 42"	64001-42
LINKAGE ARM ALUM	WM8
BUSHING KIT (4)	64002
POWER GLIDE SHIFTER	KRC-7200

FLEXPLATES



•QM DESIGN
•HEAVY DUTY
•RACING QUALITY

153 T. CHEVY 509121
157 T. FORD 509322



8288

•FITS 2 OR 3
DISC
CLUTCH
•NO SHIMS
•INCLUDES
MOUNT
STUDS

U-JOINTS



3 1/4" CROSS QC 10153
3 5/8" CROSS 9" FORD 60131
3 1/4" X 3 5/8" HYBRID 15349

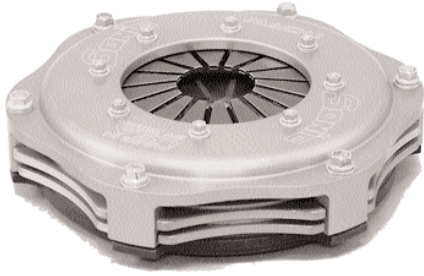


82870

HYD. TOB STOCK CLUTCH	82870
REPLACEMENT ORINGS	82871
REPLACEMENT BEARING	82872
HYD TOB 3 DISC CLUTCH	82888
REPLACEMENT ORINGS	82881
REPLACEMENT BEARING	82882
BOLT KIT	82883

1-800-328-3618

SONIC CLUTCHES BY TILTON



BUTTON CLUTCH IS COST EFFECTIVE WAY TO UPGRADE OEM-TYPE CLUTCH ASSY.

SBC, 5.5" 3 DISC FINE SPLINE	11003
SBC, 5.5" 2 DISC FINE SPLINE	11004
SBC, 5.5" 3 DISC COARSE SPLINE	11005
SBC, 5.5" 2 DISC COARSE SPLINE	11006
SBC, 7.25" 3 DISC FINE SPLINE	11007
SBC, 7.25" 2 DISC FINE SPLINE	11008
SBC, 7.25" 3 DISC COARSE SPLINE	11009
SBC, 7.25" 2 DISC COARSE SPLINE	11010
2.3L FORD PINTO, 7.25" 1 DISC	11044
THROWOUT BEARING FOR 11044	20010

5 1/2" CLUTCH PACKS	
SONIC	
1800X	2 DISC 10 SPLINE
18001	2 DISC 26 SPLINE
1800x	3 DISC 10 SPLINE
18002	3 DISC 26 SPLINE

7 1/4" CLUTCH PACKS	
SONIC	
18008	2 DISC 10 SPLINE
18003	2 DISC 26 SPLINE
18009	3 DISC 10 SPLINE
18004	3 DISC 26 SPLINE
180xx	1 DISC 30 SPLINE

TILTON REPLACEMENT CLUTCH PARTS

CLUTCH ASSEMBLY	
67-003HG	5 1/2" 3 DISC
67-002HG	5 1/2" 2 DISC
66-003HG	7 1/4" 3 DISC
66-002UGG	7 1/4" 2 DISC

FLYWHEELS	
50-042-1	7 1/4" CHEVY
50-042-1-87	7 1/4" CHEVY
	'87 CRANK PATTERN
50-042-5	5 1/2" CHEVY

FLOATER PLATES	
67-119	5 1/2" FLOATER PLATE
66-119	7 1/4" FLOATER PLATE

BOLT KITS	
95-005	2 DISC BOLT KIT
95-006	3 DISC BOLT KIT

QUARTER MASTER CLUTCHES

7 1/4" V-DRIVE ASSY



- SAME COVER GEOMETRY AS MORE EXPENSIVE QUARTER MASTER CLUTCHES
- BILLET COVER ELIMINATES FLEXING
- QUARTER MASTER QUALITY AT AN AFFORDABLE PRICE
- 14.5LBS

PART #	DESCRIPTION	SPLINE	CLUTCH PACK	TOB
298108	CHEVY 2 DISC VDRIVE	1 1/8-10	226080	
398108	CHEVY 3 DISC V DRIVE	1 1/8-10	308390	309130
398158	CHEVY 3 DISC V DRIVE	1 5/32-26	308395	309130

COVER ASSEMBLY	
309500	3 DISC & GOLD 2 DISC
PRESSURE RINGS	
209502	2 DISC STYLE (SILVER)
309501	3 DISC STYLE (SILVER)
FLOATER PLATE	
509506	ALL APPLICATIONS
OUTER RINGS	
209503	RING- 2 DISC
309503	RING- 3 DISC
BOLT KITS	
209507	KIT 2 DISC
209508	KIT- 2 DISC REV-MT-FW
309508	KIT- 3 DISC REV-MT-FW
505001	KIT- 5" FLYWHEEL TO CRANK
STARTER RING GEAR	
110010	GEAR FOR 110100 HOUSING
310010	GEAR FOR 3 DISC 5 1/2" REVERSE
FLYWHEELS/FLEXPLATES	
505172	LGC CHEVY 105T FOR 5 1/2" CLUTCH
509110	CHEVY BUTTON
509112	CHEVY 105T
509121	CHEVY 153T FLEXPLATE
509311	SB FORD BUTTON
509322	SB FORD 157T FLEXPLATE

1-800-328-3618